

M.843 | Bridge handles

Technopolymer

INCH

RoHS

PA

+230 °F
-4 °F

- 1
- 2
- 3
- 4
- 5
- 6
- 7
- 8
- 9
- 10
- 11
- 12
- 13
- 14
- 15
- RH

MATERIAL

High-resilience polyamide based (PA) technopolymer, black colour, glossy finish.

STANDARD EXECUTION

Brass bosses, threaded holes.

FEATURES

This handle is particularly suitable to be produced in light colours: the glossy finish guarantees perfect cleaning.

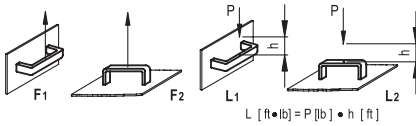
TECHNICAL DATA

Tensile stress and impact strength: F1, F2, L1 and L2 values reported in the table are the result of breaking tests carried out with the appropriate dynamometric equipment under the test conditions shown in the figure with ambient temperature.

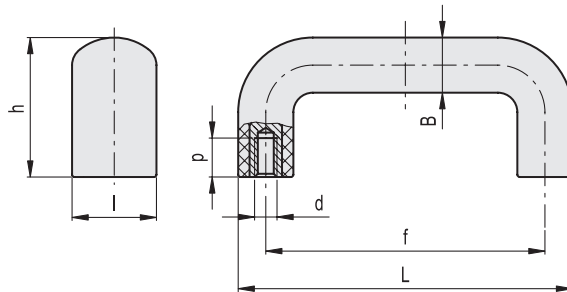
The tests have revealed that the special technopolymer used can absorb very strong shocks, with no damages, thanks to its high-resilience.



ELESA Original design



$$L \text{ [ft}\cdot\text{lb]} = P \text{ [lb]} \cdot h \text{ [ft]}$$



INCH

Code	Description	L	f	d2B	h	B	l	p	F1 [lbf]	F2 [lbf]	L1 [ft-lb]	L2 [ft-lb]	
938101	M.843/100 B-1/4-20	4.06	3.39±0.02	1/4-20	1.83	0.67	1.02	0.47	896	1568	37	88	0.11
938121	M.843/140 B-5/16-18	5.43	4.61±0.02	5/16-18	2.13	0.79	1.18	0.51	896	1120	37	88	0.18
938141	M.843/200 B-5/16-18	7.87	7.05±0.04	5/16-18	2.44	0.79	1.18	0.51	672	784	20	59	0.23

Lift and pull handles